

EGLANTINE – A JIGG (Richard Reade)

Treble violin

Part reconstructed by Ian Gaskell

Tenor recorder CUL MS Dd.5.21 f.8r

No change. Source in black notation

Bass viol CUL MS Dd 5.20 f.3r (Titled ‘Wostock’)

No change. Source in black notation

Lute CUL MS Dd.3.18 f.34r (Titled ‘A Jigg (‘Wostock’ crossed out) Eglantine’.

Bar 10: Item 4, tab _ e a _ _ _ in source

Cittern CUL MS Dd.14.24 f.38r

No change.

Bandora

Part reconstructed by Ian Gaskell

Eglantine - A Jigg

Richard Reade

Treble Violin

Recorder

Bass Viol

Lute

Lute tab

	$\frac{3}{4}$	e	a	c	e	a	e	a	c	a	e	a	a
	$\frac{3}{4}$	a			e	a	a	a	d	a	e	a	a
	$\frac{3}{4}$	c			a	c	c	a	a	c	e	b	c

Cittern

Bandora

Bandora tab

	$\frac{3}{4}$	a		c	a	a	a	a	d	a	a	a	a
	$\frac{3}{4}$	c	c	d	c	c	c	c	a	c	b	c	c
	$\frac{3}{4}$	a		a	a	a	a	a	a	a	c	a	c

10

c	a			a	e	c	e	a	c	a	c	c	e	a
a	a	e	a	d	e	c	e	a					e	a
			c						e				a	
c				a			c			c			c	

a		c		d	a	a		a		a			a	
c		d		a	a	c		c	a	a			c	
c	c	c		a		c		c	b	c			c	
a		a		a		a		a	c				a	

c e c e e a c a a c a c e c e a c a c e a c a e c e a

a c c a c d a d a c c c b a a c c a a a

Treble Violin

Eglantine - A Jigg

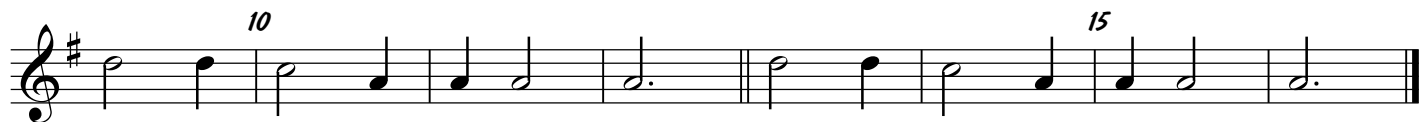
Richard Reade



Tenor Recorder

Eglantine - A Jigg

Richard Reade



Bass Viol

Eglantine - A Jigg

Richard Reade

5

10

15

Eglantine - a jig

Richard Reade

3

Handwritten musical notation for the first system of 'Eglantine - a jig'. It features a treble clef, a 3/4 time signature, and a key signature of one sharp (F#). The notation includes various rhythmic values (quarter, eighth, and sixteenth notes) and rests, with some notes beamed together. There are also some handwritten annotations like 'a' and 'r' below the notes.

Handwritten musical notation for the second system of 'Eglantine - a jig'. It continues the piece with similar rhythmic patterns and includes a double bar line. There are handwritten annotations 'a', 'r', and 'f' below the notes.

Handwritten musical notation for the third system of 'Eglantine - a jig'. It continues the piece with similar rhythmic patterns and includes a double bar line. There are handwritten annotations 'a', 'r', and 'f' below the notes.

Handwritten musical notation for the fourth system of 'Eglantine - a jig'. It shows the final few notes of the piece, including a double bar line.

A series of empty musical staves for practice or additional notation.

Eglantine - a jig

Richard Reade

3

J L6L	J L6668	J L6L	J 6L6A	J L6L	J 6L6L	J L6L	J L6L	J L6L	J L6L	J L6L	J L6L	J L6L	J L6L
----------	------------	----------	-----------	----------	-----------	----------	----------	----------	----------	----------	----------	----------	----------

Handwriting practice lines consisting of multiple sets of four horizontal lines for cittern tablature.

Eglantine – a jig

Richard Reade

The image shows three staves of handwritten musical notation for the piece 'Eglantine – a jig'. The notation is written in a shorthand style, likely representing fingerings and rhythmic values. The first staff begins with a '3' in the left margin, indicating a triplet. The notation consists of rhythmic stems and flags, with some stems having a '3' written below them. The second and third staves continue the piece with similar shorthand notation. The piece concludes with a double bar line on the third staff.

A series of ten blank musical staves, each consisting of five horizontal lines, provided for practice or additional notation.